



Gryphon Art

HAND MADE GIFT BOXES & EMBELLISHMENTS

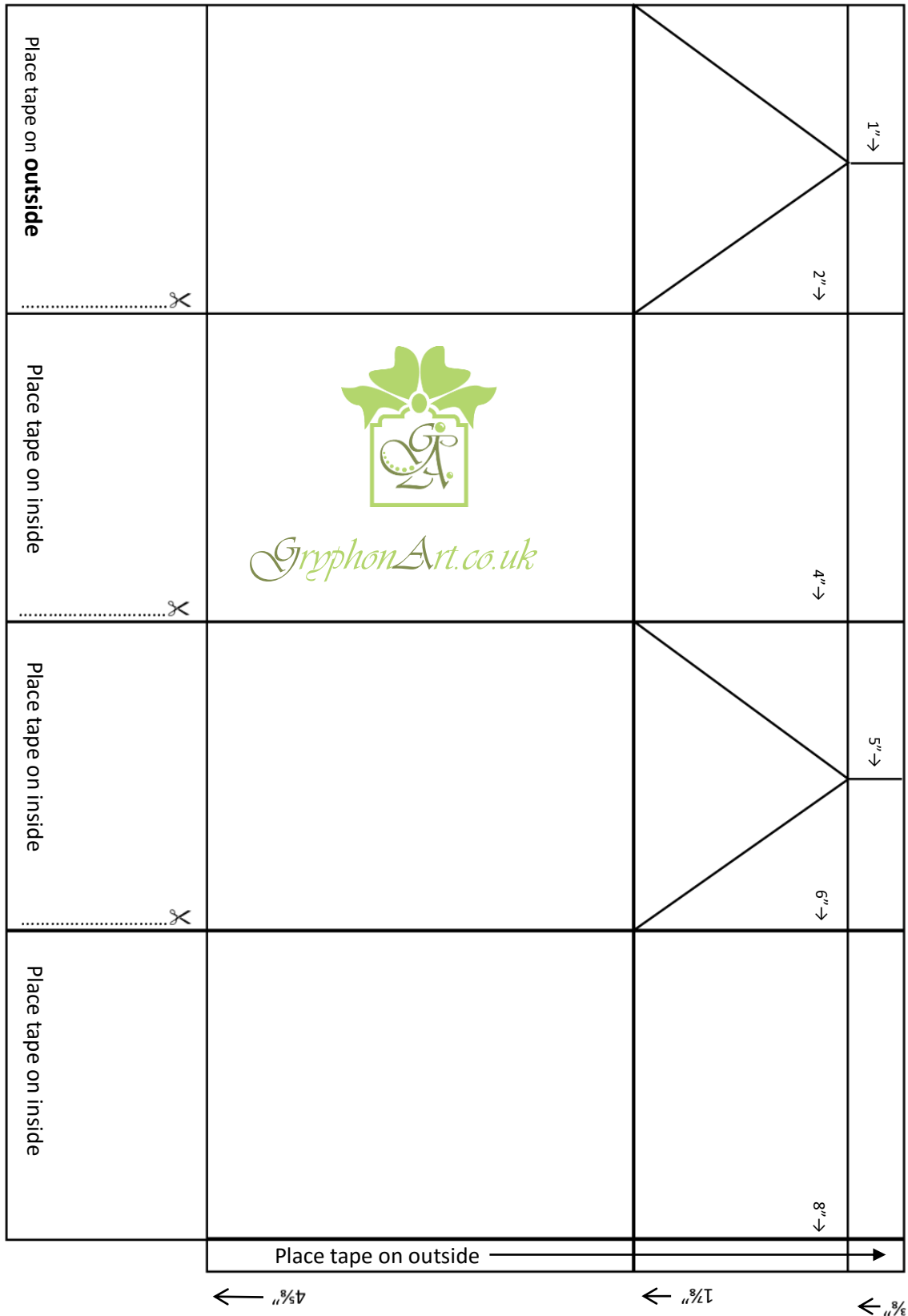
The content of this document is free to anyone who wishes to use it for personal projects.

The content of this document is not to be copied, reproduced, distributed or used in any way for profit making, without prior consent.



A5 Milk Carton

(Uses one piece of A5 Card – see end of this document for instructions)



A5 DOUBLE HEIGHT MILK CARTON CUMULATIVE MEASUREMENT SCORE LINES
(Based on A5 template but uses one piece of A4 card - Score Left to Right)



Online Tutorial <https://youtu.be/XRmZiUKFtVU>

A4	Portrait (Score on wrong side – check any straight line patterns are square to the edge of the card.)	2"	4"	6"	8"
	Turn anti-clockwise to Landscape	$\frac{3}{8}$ "	$1\frac{7}{8}$ "	$10\frac{1}{4}$ "	
	Fold and crease along all score lines. Portrait – position with right side facing upwards and narrowest column on the right hand side. (Score on right side, from edge of card to first score line only, halfway between the first and third columns.)	1"		5"	
	Score angled lines in first and third panels, second row from the top and crease.				

A5 DOUBLE WIDTH MILK CARTON CUMULATIVE MEASUREMENT SCORE LINES
(Based on A5 template but uses two pieces of A5 card - Score Left to Right)



Online Tutorial <https://youtu.be/nX5wgEBpHso>

A5	Landscape ... Cut!! (Instead of scoring at the 2" line, cut at this line, reducing width of card to 6").	2"			
	Landscape (Score on wrong side – check any straight line patterns are square to the edge of the card.)	2"	6"		
	Turn anti-clockwise to Portrait	$\frac{3}{8}$ "	$1\frac{7}{8}$ "	$4\frac{5}{8}$ "	
	Fold and crease along all score lines. Landscape – position with right side facing upwards and narrowest column on the right hand side. (Score on right side, from edge of card to first score line only, halfway between the first column.)	1"			
	Score angled lines in first panel, second row from the top and crease.				
	Repeat – (This box requires two pieces of card exactly the same. Join the two pieces using one of the $\frac{1}{4}$ " flaps so that you have a $12\frac{1}{4}$ " length of card). Put box together as usual. All the double sided tape goes on the outside of the box except for the front panel flap. (Keep double sided tape near the edge of the longer base flaps but you can apply extra to the smaller flaps).				

**A5 TALL DOUBLE WIDTH MILK CARTON CUMULATIVE MEASUREMENT SCORE LINES
(Based on A5 template but uses two pieces of A4 card - Score Left to Right)**



Online Tutorial <https://youtu.be/ixngiCUnpJU>

A4	Portrait ... Cut!! (Instead of scoring at the 2" line, cut at this line, reducing width of card to 6¼").	2"			
	Portrait (Score on wrong side – check any straight line patterns are square to the edge of the card.)	2"	6"		
	Turn anti-clockwise to Landscape	¾"	1⅞"	10¼"	
	Fold and crease along all score lines. Portrait – position with right side facing upwards and narrowest column on the right hand side. (Score on right side, from edge of card to first score line only, halfway between the first column.)	1"			
	Score angled lines in first panel, second row from the top and crease.				
	Repeat – (This box requires two pieces of card exactly the same. Join the two pieces using one of the ¼" flaps so that you have a 12¼" width of card). Put box together as usual. All the double sided tape goes on the outside of the box except for the front panel flap. (Keep double sided tape near the edge of the longer base flaps but you can apply extra to the smaller flaps).				

ROOF (Uses one piece of card 4½" x 5")					
Place card so that the longer 5" measurement is in a width position. (Running left to right rather than top to bottom). Score as follows (you will be left with a 2" section after the last ½" score line.		2"	½"	½"	
One strip of card around ⅜" thick to form a closing band. Cut to fit in situ – fits around top of roof. (If in doubt please see video).					

**A5 TRIPLE WIDTH MILK CARTON CUMULATIVE MEASUREMENT SCORE LINES
(Based on A5 template but uses two pieces of A5 card - Score Left to Right)**



Online Tutorial <https://youtu.be/4Ouez26pbRY>

A5	Landscape (Score on wrong side – check any straight line patterns are square to the edge of the card.)	2"	8"		
	Turn anti-clockwise to Portrait	$\frac{3}{8}$ "	1 $\frac{7}{8}$ "	4 $\frac{5}{8}$ "	
	Fold and crease along all score lines. Landscape – position with narrowest column (joining flap), on the right hand side. (Score from edge of card to first score line only, halfway between the first column.)	1"			
	Score angled lines in first panel, second row from the top and crease.				
	Repeat – (This box requires two pieces of card exactly the same. Join the two pieces using one of the $\frac{1}{4}$ " flaps so that you have a 16 $\frac{1}{4}$ " length of card). If using the button closure, make this and glue to top of long sides of box before assembly. (See below). Put box together as usual. All the double sided tape goes on the outside of the box except for the front panel flap. (Keep double sided tape near the edge of the longer base flaps but you can apply extra to the smaller flaps).				

BUTTON CLOSURE (Uses two or three strips of card (depending on card thickness) $\frac{3}{8}$ " x 6")					
Sew buttons (which should not really have a diameter greater than $\frac{3}{8}$ ") centrally, to the right side of one strip of card, at approximately the following intervals: Repeat so that you have two strips the same.	$\frac{1}{4}$ "	2 $\frac{1}{8}$ "	3 $\frac{7}{8}$ "	5 $\frac{3}{4}$ "	
Sew one end of a 14" strip of 3mm ribbon, $\frac{1}{4}$ " in from the end of a second strip of card, at a 90° angle to the strip of card. Repeat so that you have two strips the same, with the exception that ribbon is travelling in an opposite direction. (One ribbon extends to the right of the card strip and the other extends to the left of the card strip). (If in doubt, please see video).					
Glue a button strip to a ribbon strip. Glue a third strip to back of the first two strips. (Optional depending on thickness of card). Glue to box. Assemble box.					

**A5 TALL TRIPLE WIDTH MILK CARTON CUMULATIVE MEASUREMENT SCORE LINES
(Based on A5 template but uses two pieces of A4 card - Score Left to Right)**



Online Tutorial <https://youtu.be/iseu5VEkCBk>

A4	Portrait (Score on wrong side – check any straight line patterns are square to the edge of the card.)	2"	8"		
	Turn anti-clockwise to Landscape	$\frac{3}{8}$ "	1 $\frac{1}{8}$ "	10 $\frac{1}{4}$ "	
	Fold and crease along all score lines. Portrait – position with narrowest column (joining flap), on the right hand side. (Score from edge of card to first score line only, halfway between the first column.)	1"			
	Score angled lines in first panel, second row from the top and crease.				
	Repeat – (This box requires two pieces of card exactly the same. Join the two pieces using one of the $\frac{1}{4}$ " flaps so that you have a 16 $\frac{1}{4}$ " width of card). If using the button closure, make this and glue to top of long sides of box before assembly. (See below). Put box together as usual. All the double sided tape goes on the outside of the box except for the front panel flap. (Keep double sided tape near the edge of the longer base flaps but you can apply extra to the smaller flaps).				

BUTTON CLOSURE (Uses two or three strips of card (depending on card thickness) $\frac{3}{8}$ " x 6")					
For back strip: Place an 8" of 3mm ribbon along the centre of the right side of the strip, so that you have about an inch of surplus ribbon at either end. Turn the surplus over the ends of the strip and stick to the back of the strip.					
Sew buttons (which should not really have a diameter greater than $\frac{3}{8}$ ") centrally, to the right side of one strip of card, at either end. At approximately the following positions, which are slightly in from the ends of strip:		$\frac{3}{8}$ "	5 $\frac{5}{8}$ "		
For front strip: Take a 1 $\frac{1}{2}$ " of 3mm ribbon and place it centrally at the end of the right side of a strip of card, so that only $\frac{3}{8}$ " is adhered to the end. (The raw end of this will be covered by the button). Turn surplus around the end of the strip and stick to the wrong side of the card. Repeat this process to the other end of the strip. Take a 20" length of 3mm ribbon and, lining it up with the small $\frac{3}{8}$ " raw edges, stick the middle section of this length of ribbon to the card, so that the loose ends are of even length – approximately 7" at either end. (If in doubt, please see video).					
Sew buttons (which should not really have a diameter greater than $\frac{3}{8}$ ") centrally, to the right side of one strip of card, at either end. At approximately the following positions, which are slightly in from the ends of strip:		$\frac{3}{8}$ "	5 $\frac{5}{8}$ "		
Take another strip of card ($\frac{3}{8}$ " x 6") and glue to the back of each of your button strips forming a lamination. (Repeat so that each strip comprises three layers if necessary for strength). Glue to box. Assemble box.					

**A5 MILK CARTON CUMULATIVE MEASUREMENT SCORE LINES
(Score Left to Right)**



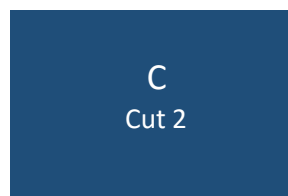
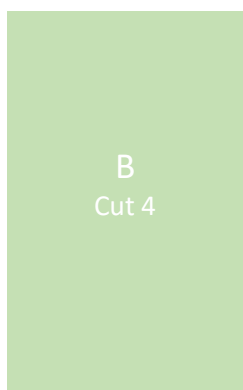
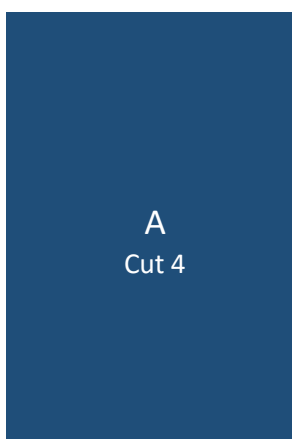
Online Tutorial <https://youtu.be/rYlc4Jgn4lY>

A5	Landscape (Score on wrong side – check any straight line patterns are square to the edge of the card.)	2"	4"	6"	8"
	Turn anti-clockwise to Portrait	$\frac{3}{8}$ "	$1\frac{7}{8}$ "	$4\frac{5}{8}$ "	
	Fold and crease along all score lines. Landscape – position with right side facing upwards and narrowest column on the right hand side. (Score on right side, from edge of card to first score line only, halfway between the first and third columns.)	1"		5"	
	Score angled lines in first and third panels, second row from the top and crease.				



A5 Milk Carton - Embellishments

This little milk carton is embellished with panels on all four sides of the main box and on two sides of the upper closure. The panel sizes and quantities are provided below.



The above shapes are to scale, but the dimensions are also provided in the following table:

ITEM	QUANTITY	DIMENSIONS
A	4	2¼" x 1½"
B	4	2" x 1¼"
C	2	1½" x 1"
D	2	1¼" x ¾"

Apply double-sided tape to the back of panels B and D. (You can use a glue, but make sure that it is not too wet or it may warp the card)

Stick the panels B to panels A and panels D to panels C, centralising them as much as possible.

NOTE: These embellishments can be placed on the scored card (forming the main box), prior to the box being assembled.

The box closure itself is a strip of card 3 times the width of the box, just under ⅜" thick, although it can be thinner if desired. This is made into a removable band by wrapping it around the top of the box and then gluing the sections that overlap. This is best glued in situ for a good fit, but care should be taken not to allow glue to ooze.