



Gryphon Art

HAND MADE GIFT BOXES & EMBELLISHMENTS

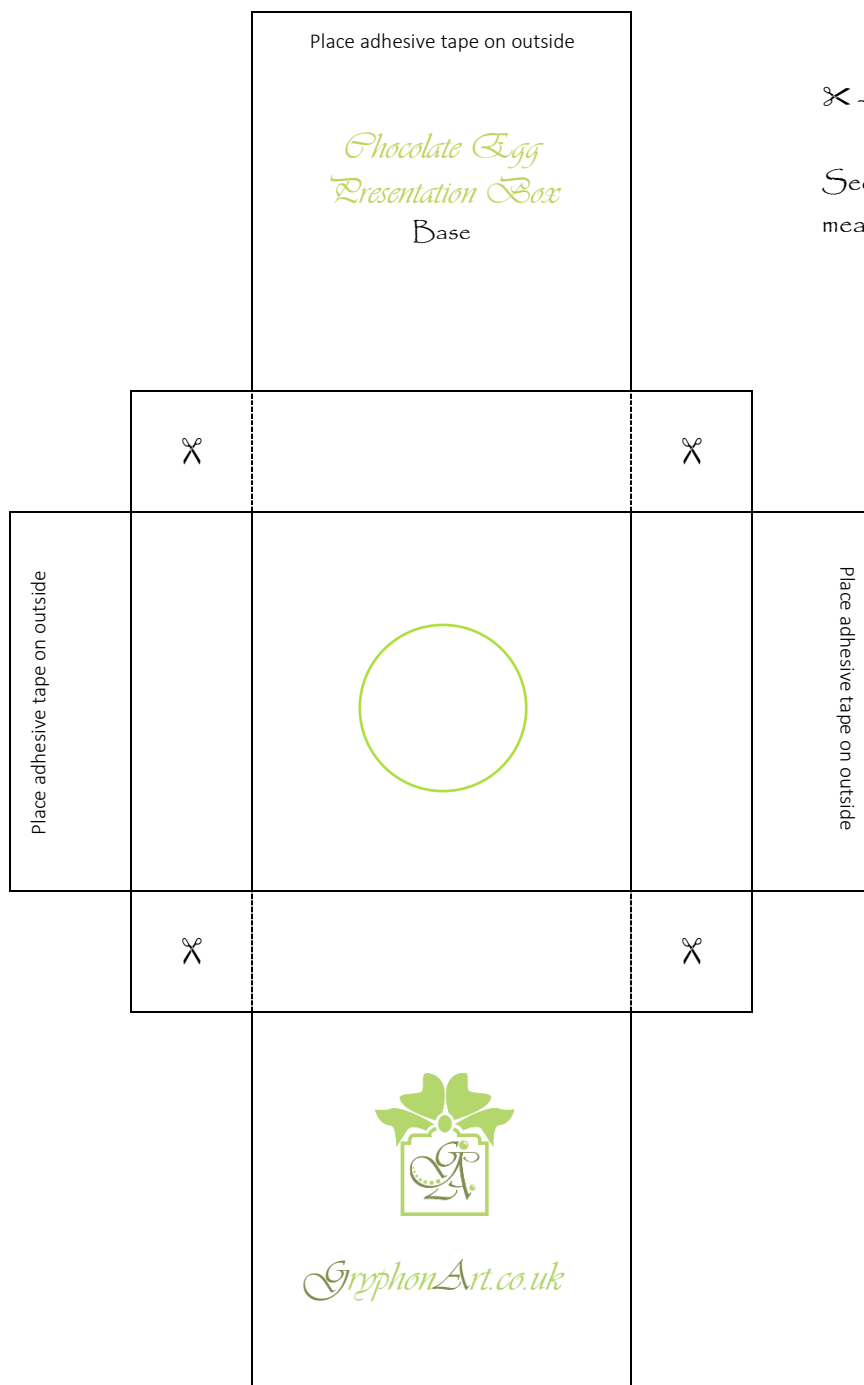
The content of this document is free to anyone who wishes to use it for personal projects.

The content of this document is not to be copied, reproduced, distributed or used in any way for profit making, without prior consent.



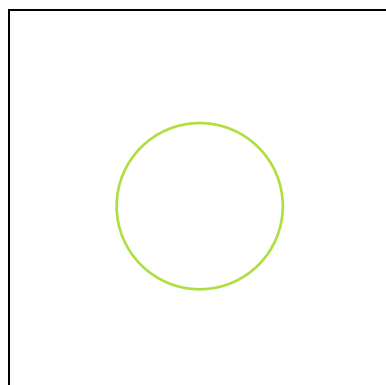
Online Tutorial

<https://youtu.be/yRTcK9-qbRk>



✂ ——— Cut along dotted lines

See table for score line measurements



If the card that you are using is not very thick, you can reinforce the base by sticking a second piece of card with a centre whole to the wrong side of the centre panel, prior to assembly.

CHOCOLATE EGG PRESENTATION BOX (BASE)
CUMULATIVE MEASUREMENT SCORE LINES
(Score Left to Right)

	Card Size: 7¼" x 4½" (Can be cut from A5 card)				
	Portrait (Score on wrong side – check any straight line patterns are square to the edge of the card.)	⅝"	1¼	3¼"	3⅞
	Turn anti-clockwise to Landscape	2"	2⅝"	4⅝"	5¼"
	<p>Cut a ⅞" diameter hole in the centre of the middle square as indicated on the template.</p> <p>Fold and crease along all score lines.</p> <p>Refer to template and cut away excess card from all four corners.</p> <p>Refer to template and cut into each corner as indicated by the scissors graphic and the dotted lines.</p> <p>Reinforce wrong side of centre if necessary.</p> <p>Place double sided tape on the flaps indicated by template.</p> <p>Glue little corner flaps to edges of box side to form a tray shape.</p> <p>Fold down long narrow flaps (opposite each other) and glue the 2" flap, covered in double sided tape, down onto them.</p> <p>Stick the remaining flap down.</p> <p>(If in doubt, please refer to the video).</p>				

CHOCOLATE EGG PRESENTATION BOX (BRACE – HOLDING EGG IN PLACE)
CUMULATIVE MEASUREMENT SCORE LINES
(Score Left to Right)

A4	Card Size: 11 $\frac{3}{4}$ " x $\frac{1}{2}$ "						
	Portrait: – Cut	$\frac{1}{2}$ "					
	<p>Landscape: (Score on wrong side – check any straight line patterns are square to the edge of the card.)</p> <p>Crease along score lines.</p> <p>Glue $\frac{3}{8}$" sections together to create a small triangle directly above the join.</p> <p>Place egg on base, dry fit brace over the top of the egg and fold the ends of the brace under the base when you are happy with the fit. Glue into place. (NB: The egg should stay in place when the box is placed on the side, but the brace should not be so tight that the egg cannot be removed and replaced).</p> <p>Embellish box as desired.</p>	4 $\frac{3}{4}$ "	5 $\frac{1}{8}$ "	5 $\frac{3}{8}$ "	6 $\frac{3}{8}$ "	6 $\frac{7}{8}$ "	7 $\frac{1}{4}$ "